



# Whitepaper

## In-House vs. Virtual Servers



## **TCO analyses have shown that the cost of managing and maintaining hardware ends up being more costly than moving to the cloud.**

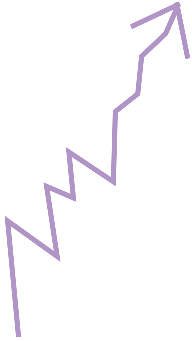
Managing on-site, physical servers is expensive and time-consuming. This time, money and energy should be focused on growing your business, not on maintenance of your infrastructure. That's where virtual servers come in. This moves your business to a service-based model, or cloud computing. You receive the same resources and power you need to continue working efficiently while devoting more time to business development and strategy. Take a look at how in-house and virtual servers compare.

---



## In-House vs. Virtual Servers: Do you know the difference?

### Scalability



#### In-House

It's not easy to scale with in-house servers, which are inflexible. Once they reach maximum capacity, you have to purchase more equipment, and this adds up quickly.

#### Virtual

By virtualizing servers, you can scale up and down quickly in response to countless factors, like growth, seasons, holidays, etc. On-demand scalability means flexibility and agility for a business.

### Cost



#### In-House

Physical servers are more expensive because it's difficult to optimize your resources. It's hard to guess exactly what you need, and oftentimes businesses spend more than necessary on equipment that ends up going unused.

#### Virtual

Implementing virtual servers results in hardware, human resource and energy savings. Virtualization leads to lower equipment, power, management and hardware costs.

### Deployment and Provisioning



#### In-House

When you add a new physical server, it takes away valuable time from running your business. You purchase the equipment, load it with the operating system and security, and then connect it to your existing network.

#### Virtual

Your business can develop a standard virtual server build that can be easily duplicated. This speeds up overall deployment of your servers, decreasing the time it takes to launch new products or services.

## Security



### In-House

With in-house servers, you don't receive the same 24x7x365 reliable support that you get with a provider. Your security is limited to what you can afford.

### Virtual

When dealing with virtual servers, it's easier to use a universal security model for all of your equipment. This ensures that all of your servers receive the same level of security, which is high when you work with a cloud provider.

## Customized



### In-House

With physical servers, you invest in assets and services that end up going largely unused. This is a waste of money and it's a one-size-fits-all solution.

### Virtual

With virtual servers, the solution is tailored to the needs of your business. With a pay-as-you-go model, you get the resources you need, exactly when you need them.

## IT Team



### In-House

The IT staff in a traditional business spends most of its time fixing bugs and updating resources, when it should be working on business strategy.

### Virtual

Virtualization means that your IT team can focus on value-added tasks such as development and planning, rather than running around fixing equipment all the time. The responsibility moves to your cloud provider.

*“With a pay-as-you-go model, you get the resources you need, exactly when you need them.”*

---

# Disaster Recovery



## **In-House**

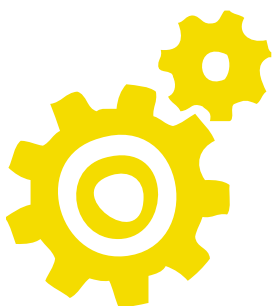
There are dozens of ways to lose equipment and data, and with in-house equipment, the risk is higher. If a disaster strikes, you could lose all of your servers in one sweep.

## **Virtual**

You can be back up and running in no time with virtual servers. If one machine fails, its work will continue instantly on another machine. You will be able to resume business as usual via an Internet connection, even during a disaster.

---

# Manageable



## **In-House**

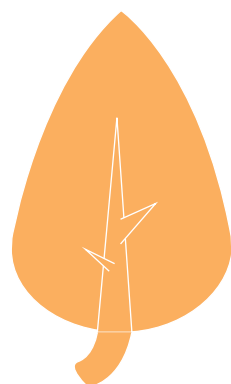
With physical servers, you have more items to manage, leading to greater risk and wasted time that should be going to business innovation. This is also a more complex process.

## **Virtual**

Virtual servers have advanced management tools, making it easy to monitor and adjust your resources. This results in less error and saved time.

---

# Go Green



## **In-House**

It's more difficult to preserve your business communications with in-house Exchange because your users have limited access.

## **Virtual**

By moving to virtual machines, you lower monthly power and cooling costs in the data center - and less energy usage is great for the environment. Additionally, you can reduce your overall footprint, as you require less hardware and less space overall.



**For More Information Contact Us Today**

Convergja  
1-855-731-3003  
[corporatesales@convergja.net](mailto:corporatesales@convergja.net)